

UK PASSIVHAUS AWARDS 2014

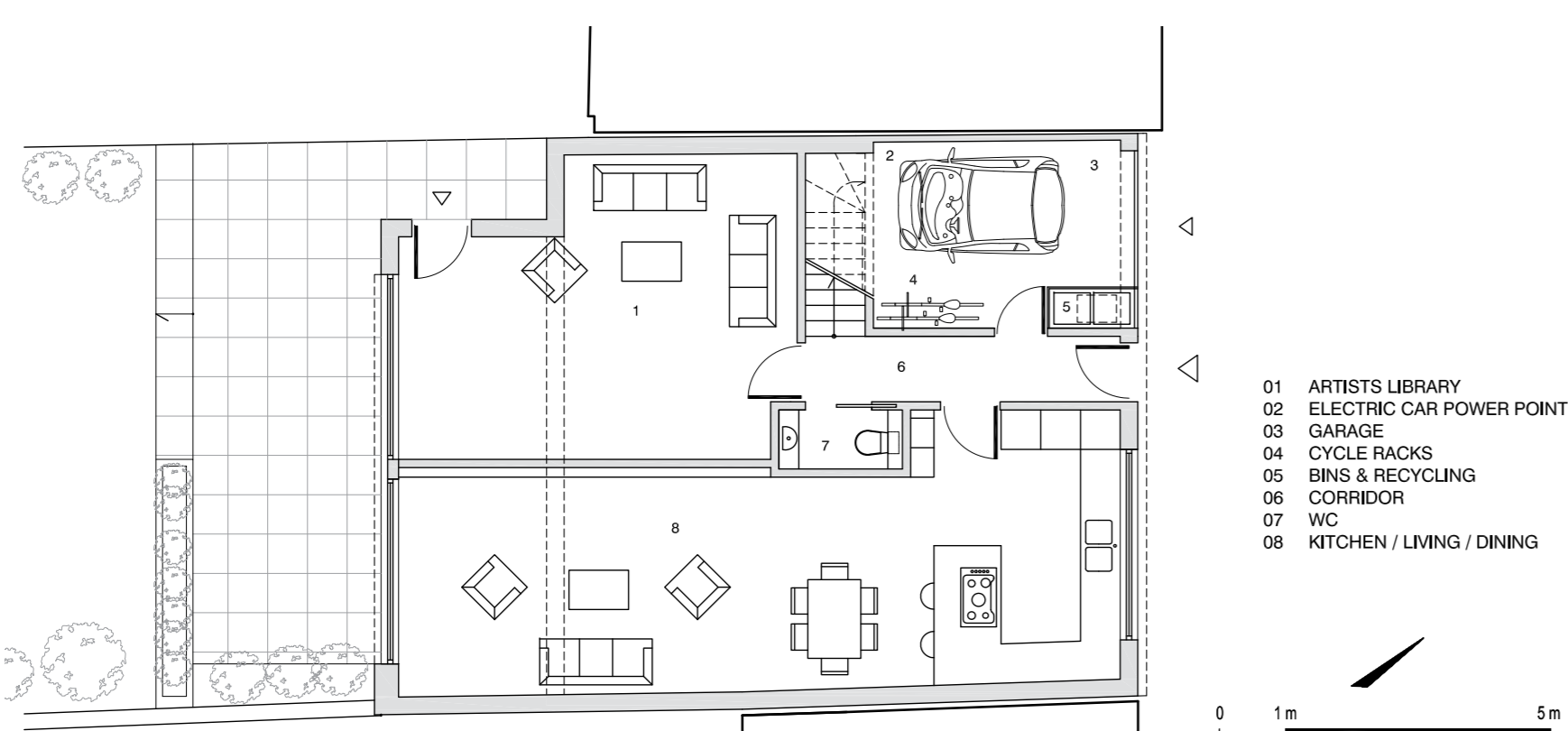
STORIES MEWS

RDA ARCHITECTS



FRONT FACADE OF STORIES MEWS

Stories Mews is a contemporary terraced house in South London with an artist's studio that can be completely annexed from the living areas, allowing for functional flexibility for the artist and his family over the lifetime of the house. Passivhaus certification was achieved despite the house being on a challenging tight urban site in a conservation area with stringent aesthetic planning conditions. To meet the Passivhaus thermal envelope and airtightness requirements, RDA developed bespoke details for the timber SIPs structure of the house, namely for the foundation, external garage door, green roofs, skylight, MVHR external grilles and external facade. The result is a façade clad with London stock brick with sliding wooden shutters hung from an exposed steel beam that spans the frontage, and glass blocks for smaller areas of interest, that blends within the mews aesthetic of its surrounding context.



GROUND FLOOR PLAN



STREET VIEW OF THE MEWS



SITE PLAN

Quote

"We used to live in Victorian house that was very draughty. It was just infuriating in the winter that it was so hard to heat. We had chimney balloons up at each chimney to try and stop the draughts. We were spending a lot on bills. It was just unmanageable, really. But now here, it's just lovely. It's very nice and warm, and you don't feel any draughts."
Current resident

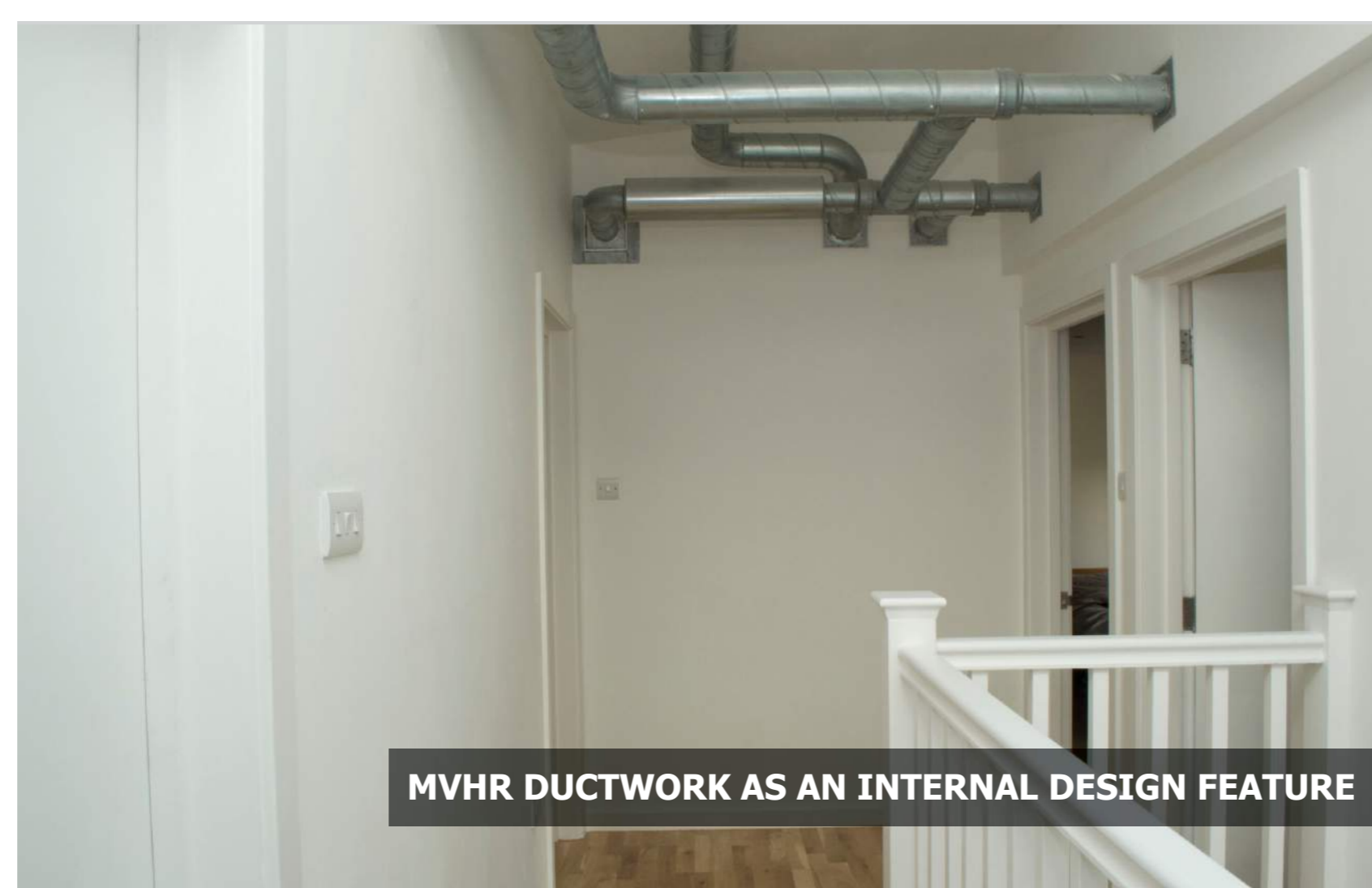
TEAM CREDITS

Client: Rachel & Bob Stone	Architect: RDA Architects
Consultants:	
Passivhaus: Carine Oberweis	Contractor: PRS Builders
SIPs system: Thomas Carter	
MVHR: Green Building Store	Certifier: BRE
Structural Engineer: John Mason & Partners	

Sponsored by



SKYLIGHT ABOVE STAIRWELL



MVHR DUCTWORK AS AN INTERNAL DESIGN FEATURE